

BANDOENG—NUMBER

© R. Marnette

TOURISM

IN NETHERLAND INDIA

Tourism

in Netherland India

Issued by The Travellers Official Information Bureau of N.I., — Rijswijk 15 — Batavia-C., Java Vol. X, No. 2. 1935

Note:

Names in the text of this number have been left in their Dutch phonetics. The most important differences are that "j" = y and "oe" is as in English "shoe".



A quite typical, if somewhat modern, Preanger Miss.



Lake Tjileuntja near Pengalengan,
at sunset.

The craters of the Tangkoeban
Prahoe: Kawah Oepas.

Bandoeng.

History and Legend.

The Sundanese often chants to his children in the soft tropical night the legends of the country. One of the favourites is that of Prince Sangkuriang, who was exiled and after a long time returned to his beloved country. There he met his mother, who had also been exiled, and the two fell in love with one another without knowing anything of their mutual relationship.

However, on a day that she was busy fondling him in the manner customary to the country, namely going through his hair with a fine-tooth comb, she suddenly recognised him by a scar on his scalp. She said nothing to him so as not to put him to shame, but tried to get out of her promise of marriage by setting impossible conditions that he must first fulfil. So she demanded that Sangkuriang should take her for a pleasure sail over the high and dry plain of Bandoeng in a large prahu.

Nothing daunted, Sangkuriang thereupon dammed the river Tjitaroem and turned the whole plain into a great lake. Of an enormous tree with the assistance of thousands of djinn he made a great prahu and all seemed ready for the pleasure trip. The beacons blazed to call the guests to the marriage feast that would follow.

At her wits end, the Queen implored the assistance of Brahma, who by magic caused the dam to fall so that the valley again became dry ground. The Sundanese today still point to the place where this occurred and call it Sanghiang Tikoro (the Sacred Throat) and, indeed, the river here disappears beneath the ground.

Through the mad rush of the waters the prahu turned turtle and so formed the mountain Tangkoeban Prahoe (the overturned prahu). At the spot where the Queen perished appeared the Kawah Ratoe (the Queen's crater). The festal beacons are still burning and form the various solfataras in and around the crater.

This is but one of many legends attaching to almost every mountain surrounding the plain of Bandoeng.

There lies beneath this legend a modicum of folk-memory; it is more than mere native poetry; for in the course of the last year or two it has been proved that in



Sawahs (irrigated rice fields) and coconut palms in the plain of Bandoeng.

The craters of the Tangkoeban Prahoe; Kawah Ratoe.



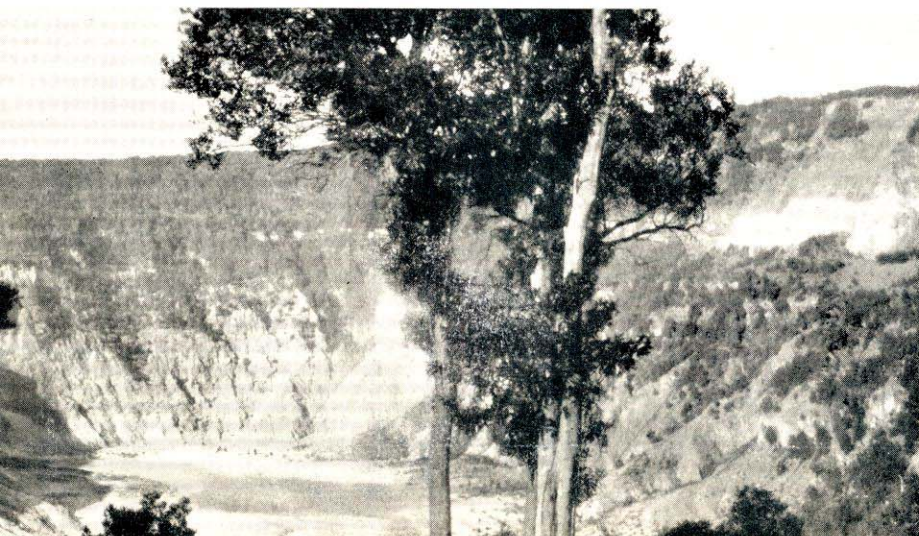
the ancient geological periods the river was indeed dammed off at this point through a volcanic eruption and that the plain was actually for a time under water. What a wonderful sight this giant lake would have made! Moreover in a later age it was just at the Sanghiang Tikoro that a gap was formed for the waters which then flowed away. That this geological poetry is indeed a fragment of folk memory is proved by the most recent discoveries which show that at a definite height up the present day mountain sides there were primitive settlements more than 2000 years ago whose impliments and remains are discovered today, presumably along what were the shores of the then existant lake. These impliments are made of flaked obsidian that here replaces the silex of other primitive stone-age cultures. This obsidian must have been brought from some distance away since it appears in nature today only in the vicinity of Nagreg (half way to Garoet).

It was only in the 19th century that the plain of Bandoeng became better known. The present city dates from 1810 when by a simple decree a native chief with his dependents was settled there. Its great development as a European city only took place in the latter years of the 19th century.

The City.

Bandoeng is a surprise as a modern mountain city in the tropics. It combines the East and West; it presents the comfort of the West with the never-changing beauty of the East. It offers opportunities for study as well as for recreation and sport and especially for the study of the age-old forces of nature. It is little wonder that many Hollanders settle there permanently.

After a trip through the parks and visits to the Museums there are in the city and its surroundings many European restaurants offering pleasant possibilities of wiling away a free half hour. One of the special attractions is to watch the sun set from the hills and the thousand lights of the great city flicker into life.



Bandoeng is a city of villas and many of those built there in recent times by various prominent citizens are models of modern architecture.

There is little fear here of the customary tropical disorders and in the lovely and cool mountain air the tired visitor speedily recovers his health and vigour. The City averages some 2100



A shady path in Jubilee Park, Bandoeng.



The Dago Waterfall, above Bandoeng.



In Molucca Park
Bandoeng.

Planting young rice in sawahs
in the plain of Bandoeng.





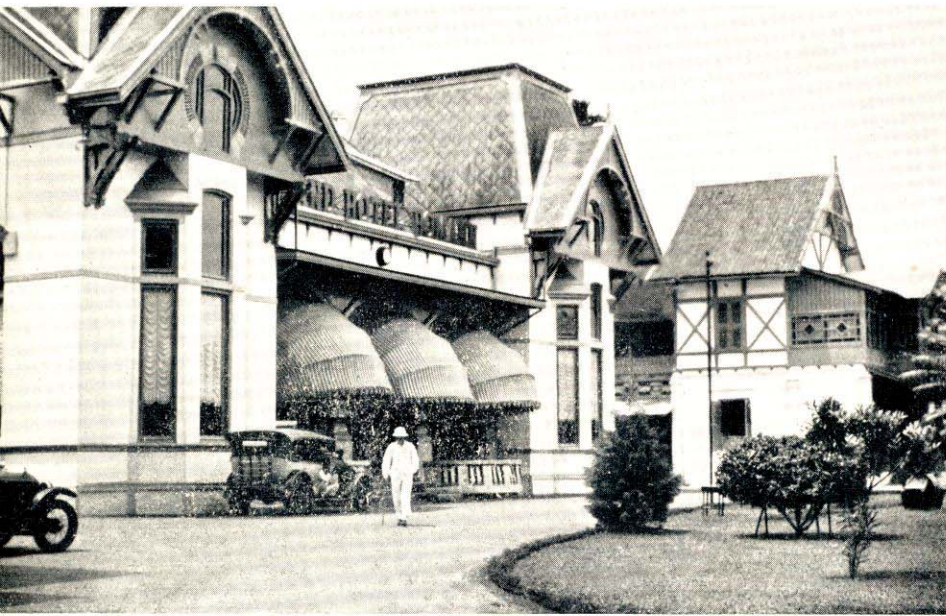
Sitoe (Lake) Aksan at
Andir near Bandoeng.

Fountain in Jubilee
Park, Bandoeng.





The Railway Station, Bandoeng.



The Grand Hotel Homann, Bandoeng.



Residence of the General Officer Commanding the Army of Netherland India.

ft. above sea level and at the higher places in the neighbourhood it is often quite cold!

The principal and best known tropical trees are grown in the Jubilee Park each classified with its scientific, Dutch and native names. One of the gems of the park is the giant calla-lily (*Amorphophallus titanum*) whose fragrance when in flower fills the air for yards in every direction. Its leaves can grow to a height of some 16 feet and it resembles a tree more than a lily. These leaves are certainly the largest in the world.

Visitors should also see the Department of Transportation and Waterpower in de Kat Street. This building, which cost several million dollars, is the most beautiful recently built public building in Netherland India. Eastern styles have been harmoniously adapted to Western needs.

The Technical Faculty of the University in Java is housed in a building of quite different style; that of the Minangkabaus from the Padang Highlands.

Other scientific foundations are the Bosscha Observatory, erected by the late K. A. R. Bosscha, the "Tea-King" of Pengalengan. Here is housed the largest telescope in the southern hemisphere. It is to be seen from the city in the hills to the north. At a somewhat greater distance is the radio station at Ma-

labar, whence radio connections with Holland were first obtained, long before such distances were possible for other radios in Asia. The mountain peaks are here used for antenna masts as well as the margins of the great valley which splits Mount Malabar.

Bandoeng is a most suitable centre for conferences thanks to its many scientific institutions and its glorious climate. It has housed, amongst others, the fourth Pan Pacific Science Congress.

Making a tour of the town, the air-port of Andir is passed to the west. This is the headquarters of the Military Aviation Service and also of one of the amateur flying clubs in the Netherland Indies. Night manoeuvres in the brilliantly lighted field attract much attention from the air-minded inhabitants of the city. Bandoeng is also the terminus in the Indies of the great Holland to Java air line of the K.L.M. (Royal Netherland Airways). If it can be arranged, a flight over the craters of the volcanoes in a plane of the K.N.I.L.M. (Royal Netherland Indian Airways) is one of the best ways of getting a quick impression of the natural wonders of this country.

The Environs.

The best way to visit the many beautiful spots in the neighbourhood of Bandoeng is to step into



Department of Transportation and Hydraulic Engineering.



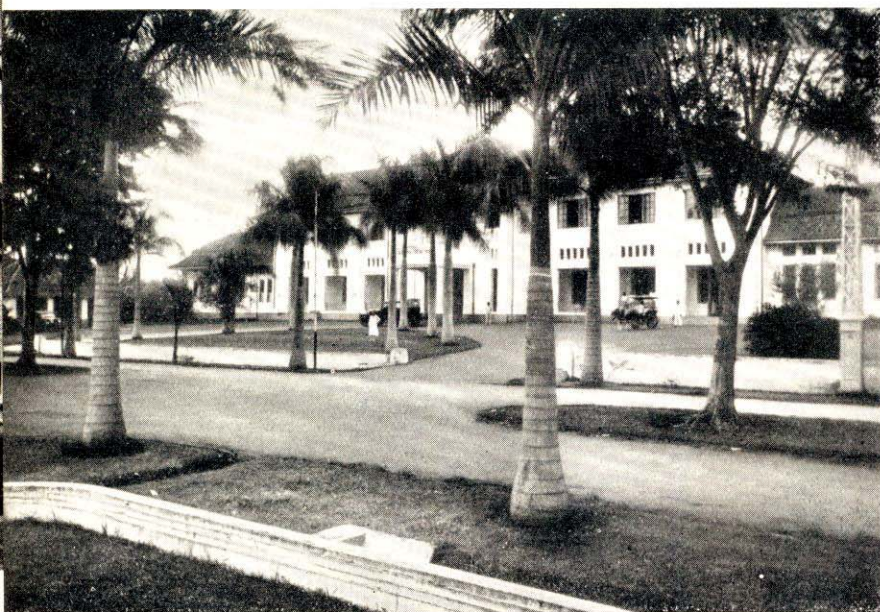
The Grand Hotel Preanger, Bandoeng.



The Technical Faculty of the University in Java, at Bandoeng.



Monument to Dr. de Groot who established radio communication between Java and Europe in 1923.



The Municipal Hospital, Bandoeng.

a motor car and ride out of the city along any route you may chose; in a short time you will be amongst the mountains by a river or waterfall or lake, between glittering chalk cliffs with here and there a mysterious looking cave, or in the middle of the virgin forest. Jungle training is no more necessary for making these trips than it is for making those to the Tangkoeban Prahoe or the Papandayan that

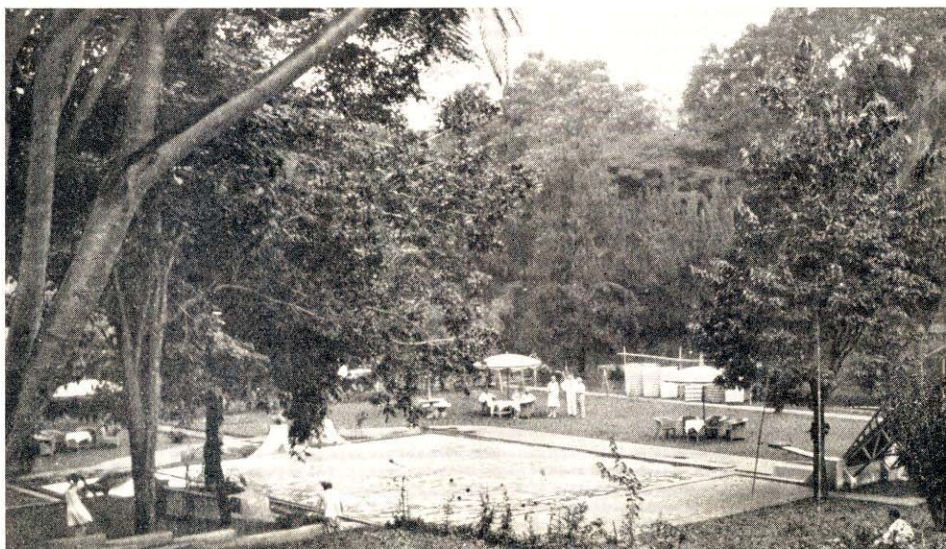
will be described in greater detail presently.

Motor cars can reach the very edge of the Tjisaroea waterfall, some 250 ft. high, in about half an hour. Further away is the mountain lake of Talaga Patengan, in which is reflected the 8000 ft. high Patoeha. In these idyllic surroundings the great scientist and writer Junghuhn lived while writing one of his best known works. Even the mysterious white sulphur lake of Kawah Poetih, lying 8000 ft. high, is to be reached by car with the exception of about the last half hour of the trip which must be made on foot. The road passes through virgin forests and tea estates.

The trip through the Garoet plains with their celebrated lakes (Leles and Bagendit) may be made in a morning. There are tea and cinchona estates everywhere.

Anyone who wishes to escape for a time from the heat can spend a few days in one of the holiday centres of Pengalengan or Lembang where there are hotels enough for all comers. From Pengalengan a short trip to Lake Tji-

Swimming Bath at Dago, above Bandoeng.



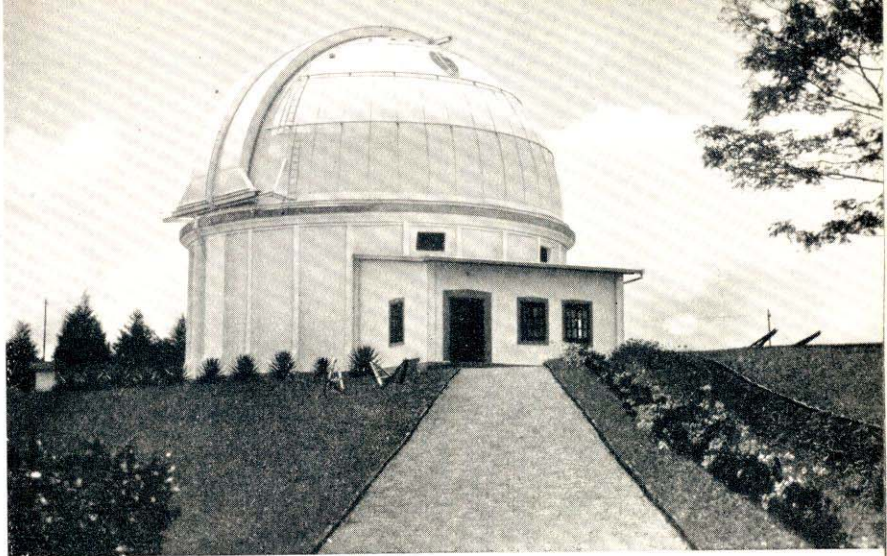
leuntja with its bath-hotel is well worth while.

The Association "Bandoeng Vooruit" will be pleased to send prospective visitors without cost a little folder with a planned itinerary for a visit to Bandoeng of one week.

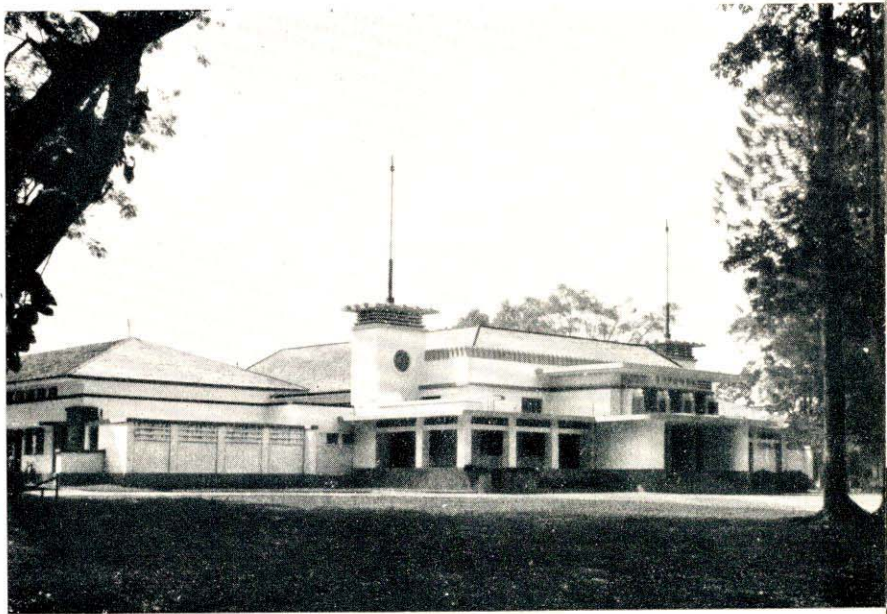
A trip to Mount Tangkoeban Prahoe.

To the north of Bandoeng rises like an overturned boat, rich in legend, the massive mountain Tangkoeban Prahoe, which dominates the entire plateau. In ancient days many lava streams flowed down its rugged slopes.

It is the pride of Bandoeng that it is now possible to reach the very edge of the great craters of this 6800 ft. high volcano in a motor car along a perfectly feasible road, which was specially laid out for tourists. It takes considerably less than an hour from Bandoeng to reach the edge of the large crater, the Kawah Ratoe (see "Legends") which is 1100 ft. deep from the highest point on its circumference. Behind this lies the other crater, the Kawah Oepas (in Sundanese oepas means



The Bosscha Observatory, above Bandoeng.



The City Hall, Bandoeng.

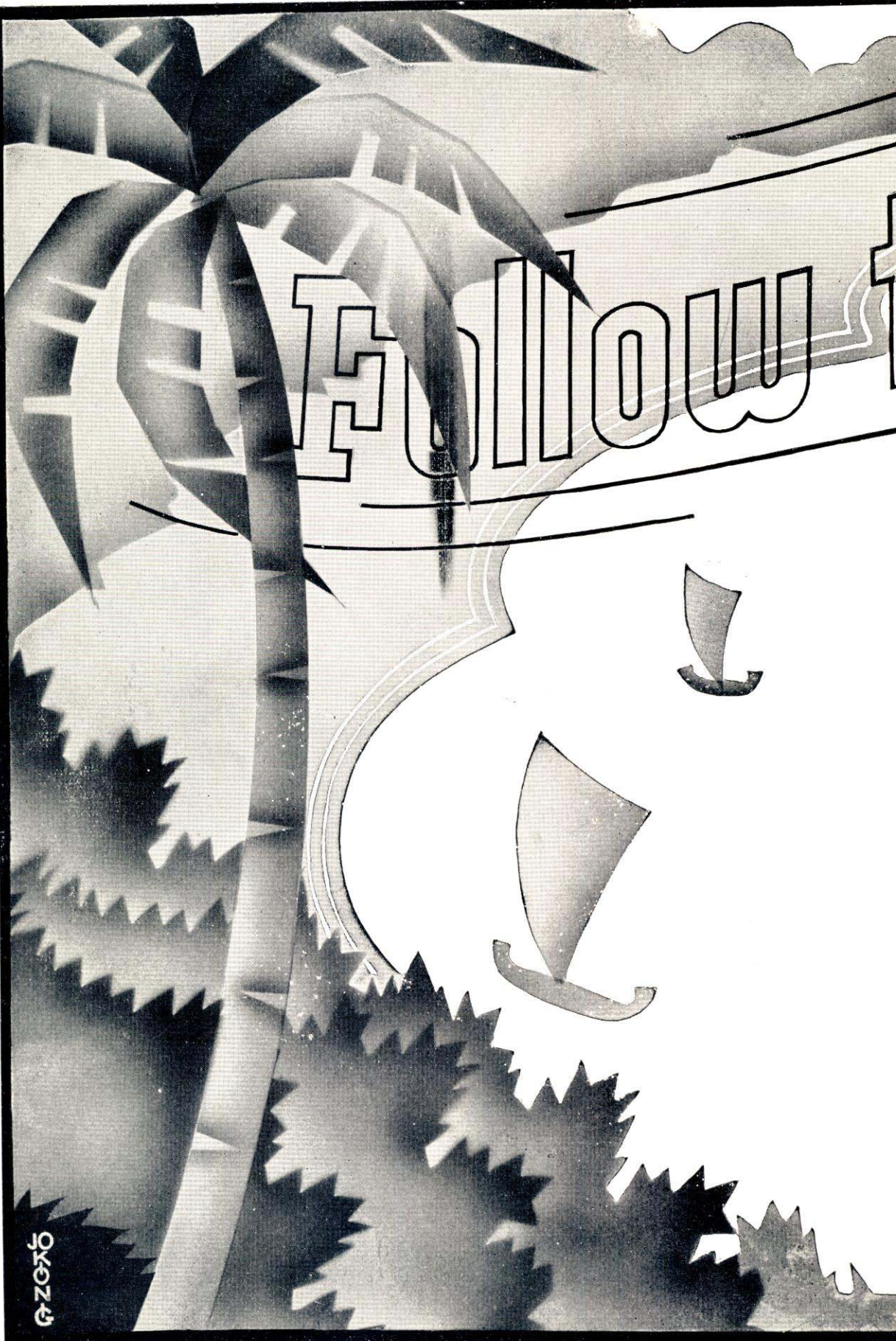
The Concordia Club, in Bandoeng.



poison). The mountain has obtained its characteristic drawn-out form from the presence of the two craters.

The road winds slowly upwards through virgin forests covering the slopes of the mountain till the car suddenly emerges from the forests onto the grey ash-covered fields at the summit. The last part of the trip is made through the typical crater vegetation of tree-like forest berries (*Vaccinium*).

Follow



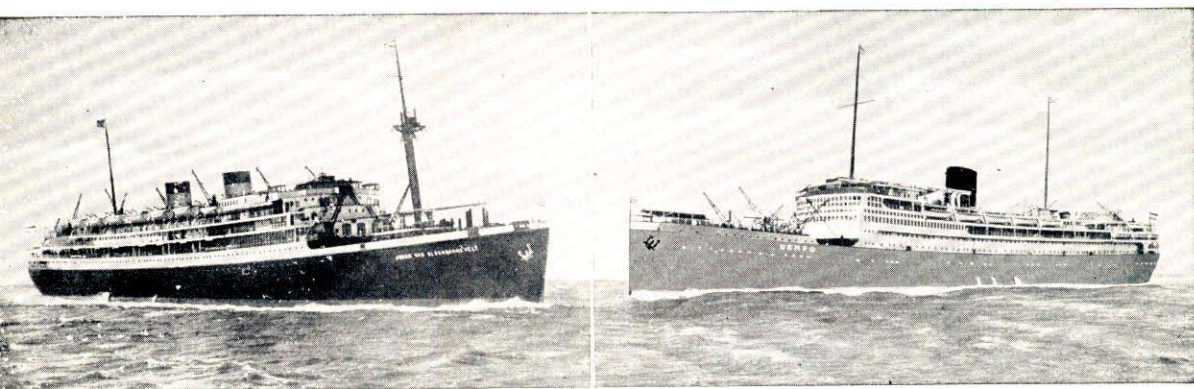
The Call of

SUMATRA — JAVA — BALI

and
travel to these Wonderlands

by
the „CRACK“ Liners of the Dutch Mails specially fitted for voyages in the tropics
and offering you

COMFORT SERVICE
SPEED



THROUGH
BOOKINGS
EUROPE CHINA-JAPAN EUROPE
AUSTRALIA
ROUND THE WORLD TOURS

FOR FULL INFORMATION APPLY TO

NEDERLAND LINE ROTTERDAM LLOYD

Royal Dutch Mails

AMSTERDAM — BATAVIA C. — ROTTERDAM



A beautiful view over the plain of Bandoeng with the mountains in the background and one of Bandoeng's lovely suburban villas in the middle distance.

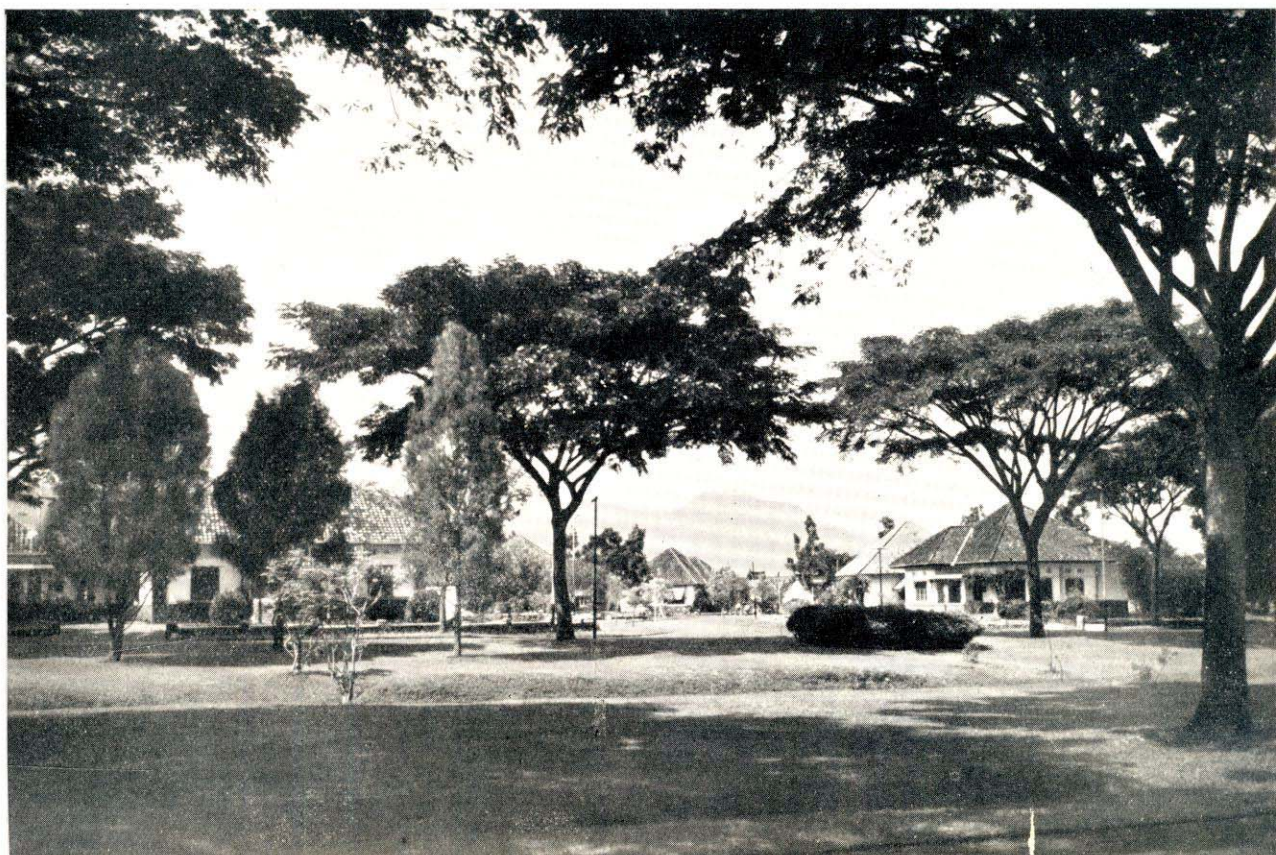
Bandoeng has many fine buildings. This is the office of the Resident of Priangan in Bandoeng.





Bandoeng has many fine parks.
Here is a view in one of them.

A corner in a modern residential section
of Bandoeng. The trees are the beautiful
"Flame of the Forest" trees.



On the other side of the crater is the hut of the Volcanological Survey whence a watch is continually kept on the craters for study purposes. Every day one of the members of the Service descends into the crater preceded by his dogs which protect him from being overcome by fumes. The narrow path he treads is clearly visible. The temperature of the solfataras and the condition of the gases in the valleys are investigated daily.

One of the "Death Valleys" (marked by a notice board bearing the Dutch inscription "Stikvallei") lies on the crater edge and may be reached in 20 minutes walk. All the trees here are dead and the ground white; skeletons of animals often cover its bottom.

Any attempt to enter the crater without a competent guide is highly dangerous and many accidents have been caused by such carelessness. A monument has been erected to the victims of such misadventures! Walks along the top of the crater wall are, however, entirely without danger and offer lovely views of the craters, the plain below and in the far distance even the Java Sea. A map of the paths may be obtained either from "Bandoeng Vooruit" or from the toll-gate on the road up the mountain. A fine walk is to the parasitic crater, Kawah Domas, on the western slopes of the mountain where sulphurous fumes pour out of the ground on all sides and there are several working geysers. The path leading to it comes out again onto the motor road.

Anyone wishing to enjoy the views at their best should time his trip for the early morning when there is less wind and the fumes are less trying. The craters are also a particularly lovely sight by the light of the full moon.

Visitors are advised to leave any silver articles of jewelry (cigarette cases, matchboxes, etc.) at home as the sulphur fumes will blacken them within a few moments.

Mount Papandayan.

The Papandayan is one of the most active volcanoes in West Java. In the light of modern science, however, visits may be made to it with the perfect assurance of personal safety. No tourist should miss it, but unfortunately it is only to be reached by a long trip from the Garoet plain that takes some $3\frac{1}{2}$ hours or from Pengalengan in some 3 hours, from either place on foot. Efforts are now being made, in view of the success of the road to the top of the Tangkoeban Prahoe, to make the summit of the Papandayan more accessible to tourists. A motor road is being constructed from the Pengalengan plateau, in itself a place well worth visiting for its natural beauties, which lies only $1\frac{1}{2}$ hours from Bandoeng. This new road will be unique; it leads straight up into the crater between steaming geysers and bubbling pools to a height of some 7,600 ft.

Where formerly the woodsmen wandered through narrow paths and the tigers prowled by night the forest giants are now felled and the road has begun to climb up from the plain along the edges of deep ravines and around breath-taking curves but nowhere at all steep.

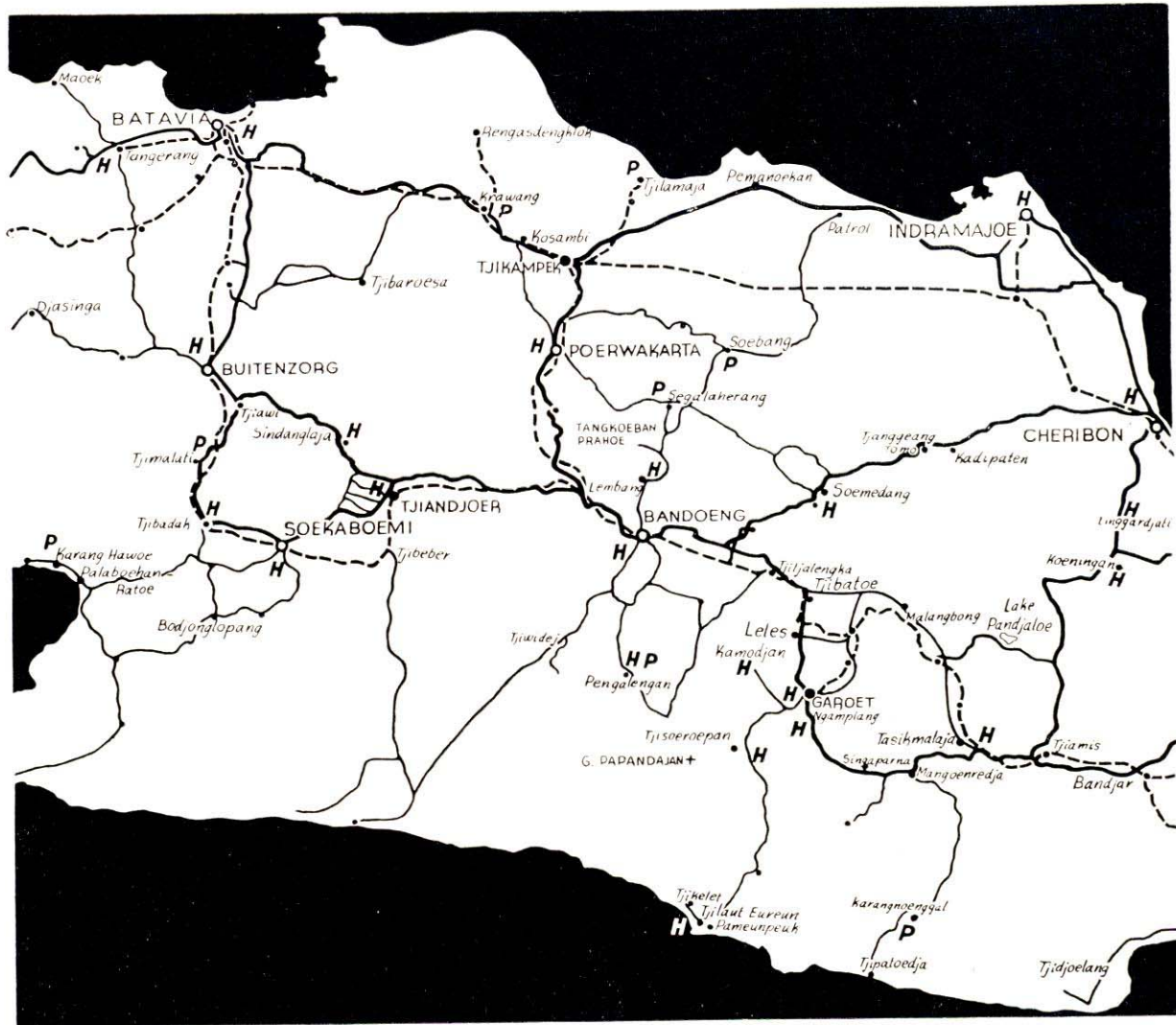
At the present time it is possible to reach a height of some 7000 ft. and this part of the road is partly surfaced, so that the climbing of the Papandayan is already shortened for motorists and may now be done in half the time needed a few years ago. It is hoped to reach the crater itself in 1936. The trace leads at a height of some 7,600 ft., just before the crater is reached through a forest park, the Tegal Boengbroeng which is covered with alpine flowers closely resembling those of Europe. Here are the soft white bushes of Javanese Edelweisz

(Anaphalis). Bees buzz around and the scent of the flowers makes the cool air aromatic.

From this place it is a climb of some 300 ft. to Goenoeng Nangklak which offers from its summit one of the most beautiful panoramas in Java. To the left is the green



A railway viaduct over one of the deep ravines in the Preanger mountains.



plain of Pengalengan with its lakes and the mountains of West Java; to the right the silvery plain of Garoet with the clear silhouettes of the Tjikorai and Slamet. These beauties were formerly hidden from tourists and only known to mountaineers. The crater itself is, however, too well known to need much description.

A trip to this crater can be combined with the well known trip to the Malabar. One of the particularly beautiful sights along this route is the terracing of the sawahs high up in the mountains near Patjet.

“N I T O U R” NETHERLAND INDIAN TOURIST OFFICE

Garages at:

BATAVIA
BANDOENG
SOURABAYA
SAMARANG
DJOCJA

MALANG
MACASSAR
PADANG
MEDAN
ETC. ETC.

Do not hesitate to apply for the free travelogue “HOW TO SEE NETHERLAND INDIA”, and further information, all free,

from the

NETHERLAND INDIAN
TOURIST OFFICE

BATAVIA-C. 2, Rijswijkstraat (Java)
SOURABAYA 4, Simpang (Java)

GOVERNMENT RAILWAYS



THE SYSTEM THAT AIMS AT GIVING SATISFACTION

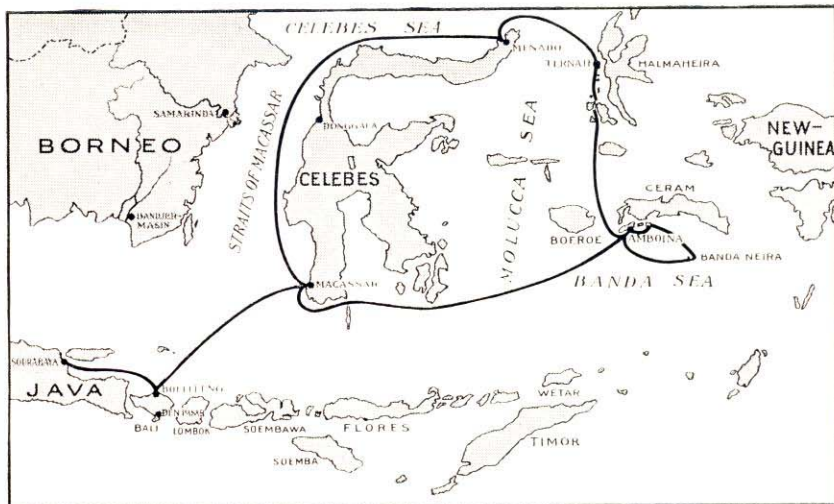
COME TO JAVA

The striking sceneries for which Java is famous can be enjoyed while travelling in most comfortable railway coaches equipped in modern fashion, including dining cars with efficient service on all express and fast trains

For
Information
Apply to the
Publicity
Department
Government
Railways
Bandoeng

Java





K.P.M. Molucca Tours

TAKE A CRUISE around the Molucca Sea, and visit the once world-famous SPICE ISLANDS of AMBOINA, BANDA and TERNATE, also MENADO with its lovely mountainous surroundings known as the MINAHASA.

Your Molucca-trip by K. P. M. will fully justify the popular interpretation of the Company's initials:

*Keep
Pleasant
Memories*

REGULAR sailings to the Molucca Sea by first class passenger steamers from Sourabaya and Macassar.

For INFORMATION apply to:

K.P.M. Head Offices **Batavia** Java, Dutch East Indies and **Amsterdam**—Holland.
Representatives in **U. S. A.**: R. W. Kaak — Chrysler Building — **New York**;
D. A. Vonk — Monadnock Building — **San Francisco**
Australasia: K.P.M.-representative — 255 George Street — **Sydney**
Africa: K.P.M. Representative — K.P.M. (Pty.) Ltd., 316 West Street, **Durban**
Great Britain and Ireland: D. H. Drakeford — General Passenger Agent
60 Haymarket — **London**

ROYAL PACKET NAVIGATION COMPANY
K. P. M.-LINE



Hotel des Indes

BATAVIA

The
Premier Hotel
in
Java

Fr. J. A. VAN ES, General Manager

Grand Hotel Homann

Bandoeng

Recently Visited by

*Their Majesties The
King and Queen of Siam;
Their Royal Highnesses
The Crown Prince and
Princess of Belgium; His
Highness The Susuhunan
of Solo; His Excellency
The Governor General
of Indo-China; Her
Grace Catherine; Duchess
of Westminster*

President: Fr. J. A. VAN ES
Manager: M. J. J. VLEUGELS

Grand Hotel Ngamplang Garoet

*3100 feet above Sea Level
Every Room has a view
to remember for a lifetime*

*Tennis -
Swimming - Golf -
Horses*

Prices extremely moderate

*The Children have not been
forgotten*

*Children's
Hippodrome
with Selected Ponies*

THE
Vacation Hotel of Java

President: Fr. J. A. VAN ES
Manager: W. DE GROOTH

COOK'S AND WAGONS-LITS WORLD TRAVEL SERVICE

Apply to the nearest Cook or Wagons-Lits office for programmes, steamer connections, and cost of Tours, all inclusive or travel ticket only, in Java, Bali, Sumatra, Celebes, Borneo, the Moluccas (Spice Islands), Siam, French Indo- China, British Malaya, etc.

Cook's Super Handbook "Malaysia & Indo-China" 204 pages with maps and profusely illustrated, gratis on receipt of postage (30 cent Straits).

The Melayan Travellers' Gazette 106 pages, published quarterly sent post free on application.

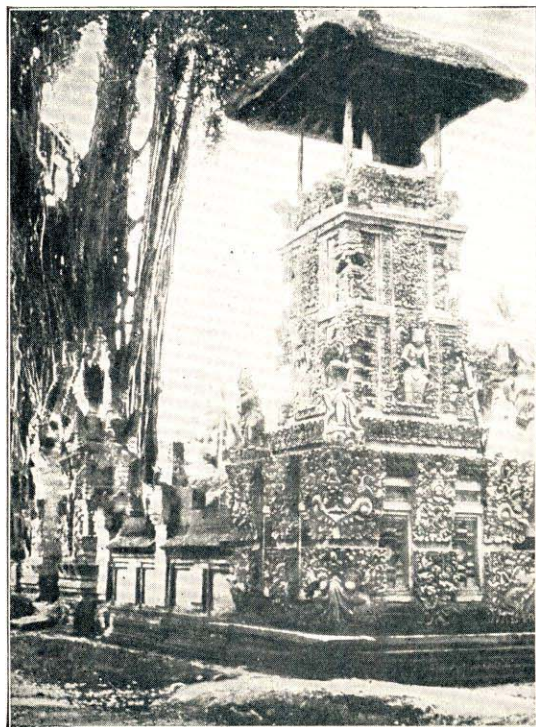
Cook's 'Traveller' Cheques are cashable throughout the world and are the safe method of carrying funds.

THOS. COOK & SON, LTD.
39, ROBINSON ROAD, SINGAPORE
Cable address: "COUPON"

The GRAND HOTEL PREANGER



is the Leading Hotel
of Bandoeng



The
"JAVA-CHINA-JAPAN LINE"

are pleased to present:

 **MACASSAR-
BALI-JAVA**

En route: ROUND-THE-WORLD
or FAR EAST-EUROPE
vice-versa



Fortnightly Cruises:

Northbound: BATAVIA — HONGKONG — SHANGHAI

Southbound: SHANGHAI — AMOY — HONGKONG — MANILA
and through inland seas to
MACASSAR, BALI and SOURABAYA

Connections with Transpacific sailings and weekly Java—Europe sailings

Hotel der Nederlanden

BATAVIA-CENTRUM, JAVA

Telephone No. 3241

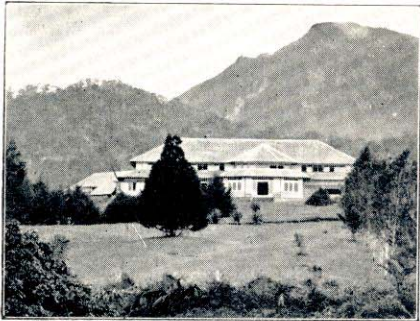
Telegraphic Address

"Nederlanden"

The traveller to Batavia, whether on business or on pleasure, will find at the Hotel der Nederlanden the best of accommodation and comfort at moderate rates.

*We
pride ourselves
on
our service*

J. STEGMAN, Manager



GRAND HOTEL BRASTAGI

Sumatra's renowned Holiday Resort

4800 feet above Sea level

Bracing Air
Extensive Views
Riding - Tennis - Billiards
Swimming.
Golf and Midget Golf

—
Rooms with hot and cold
running water.
Modern sanitary arrangements
—
Dancing with own Orchestra
—

Particulars at all Tourist Offices
C. Walter, Managing-Director

GRAND HOTEL DJOKJA

THE FOREMOST HOTEL

Near the famous Borobudur and Prambanan temples.

Sultan's Palace (Visitors admitted Fridays).

Permanent exhibition of native arts and crafts in the hotel.

ROOMS WITH PRIVATE BATHROOMS.
HOT AND COLD RUNNING WATER.

Codes: Bentley, A. B. C. 5th Ed.

"The Flying Dutchman"



WEEKLY
SERVICE

AMSTERDAM ↔ BATAVIA

PASSENGERS
MAIL - FREIGHT

9000 MILES

THE WORLD'S LONGEST
AIR-LINE

EUROPE
AFRICA
ASIA

**WEST AUSTRALIAN
JOINT SERVICE**

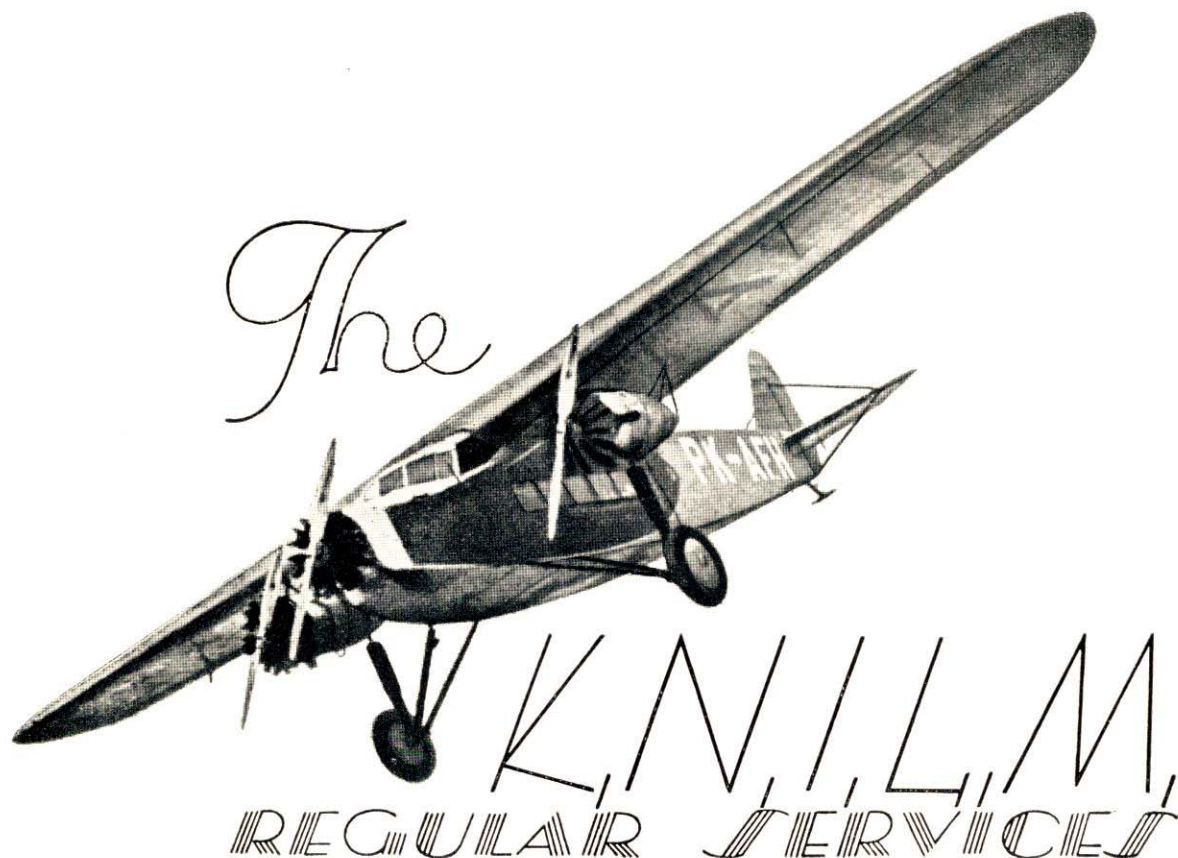
Fortnightly Sailings

**SINGAPORE-
WEST AUSTRALIA
& VICEVERSA
VIA JAVA**

AGENTS

Singapore { Mansfield & Co. Ltd.
 { Boustead & Co. Ltd.

Batavia - MacLaine Watson & Co.
Samarang - McNeill & Co.
Surabaya - Fraser Eaton & Co.
Fremantle - Dalgety & Co. Ltd.



IN THE NETHERLANDS INDIES AND TO AND
FROM SINGAPORE ARE:

Batavia — Bandoeng	vice versa	3 × Daily
Batavia — Semarang — Soerabaja	„ „	Daily
Batavia — Palembang — Singapore	„ „	Weekly
Batavia — Palembang — Pakanbaroe — Medan	vice versa	Weekly

● **COOL**

● **QUICK**

● **COMFORTABLE**

